

# 2022 INVESTOR FACT SHEET

CANADIAN UTILITIES | STRUCTURES & LOGISTICS | NELTUME PORTS



With approximately 6,400 employees and assets of \$24 billion, ATCO is a diversified global corporation with investments in the essential services of Structures & Logistics (workforce and residential housing, innovative modular facilities, construction, site support services, workforce lodging services, facility operations and maintenance, defence operations services, and disaster and emergency management services); Utilities (electricity and natural gas transmission and distribution, and international operations); Energy Infrastructure (energy storage, energy generation, industrial water solutions, and clean fuels); Retail Energy (electricity and natural gas retail sales, and whole-home solutions); Transportation (ports and transportation logistics); and Commercial Real Estate.

## ATCO QUICK FACTS

### Common Shares (TSX): ACO.X, ACO.Y

<b>Total Assets</b>	<b>\$24 Billion</b>
<b>Dividends</b>	<b>\$1.85 per share annualized</b>
<b>Market Capitalization</b>	<b>\$5 billion</b>
<b>Common Shares Outstanding</b> <i>(weighted average)</i>	<b>114 million</b>

ATCO share registry has both Class I Non-Voting (ACO.X) and Class II Voting (ACO.Y) common shares. Above values as of September 30, 2022.

## INVESTMENT HIGHLIGHTS

**Diversified Infrastructure Holdings** – ATCO’s portfolio focuses on integrated, sustainable solutions in the essential services of shelter, logistics and transportation, agriculture, water, real estate, and energy and energy infrastructure.

**Operational Excellence** – As a leader in operational excellence, ATCO’s portfolio of companies create inter-generational value for our share owners. We achieve operational excellence through service reliability and product quality for our customers and the communities we serve.

**Global Outlook, Community Minded** – ATCO continues to grow and expand our business with a focus on disciplined capital investment in select global markets. Community engagement, including an unparalleled history of Indigenous relationships, is at the core of how we do business.

**Environmental, Social, and Corporate Governance** – In 2022, ATCO announced a comprehensive set of 2030 environmental, social and governance targets and a commitment to achieve net-zero greenhouse gas (GHG) emissions by 2050; highlighting our leadership in energy transition, diversity and inclusion, community involvement, and transparent governance.

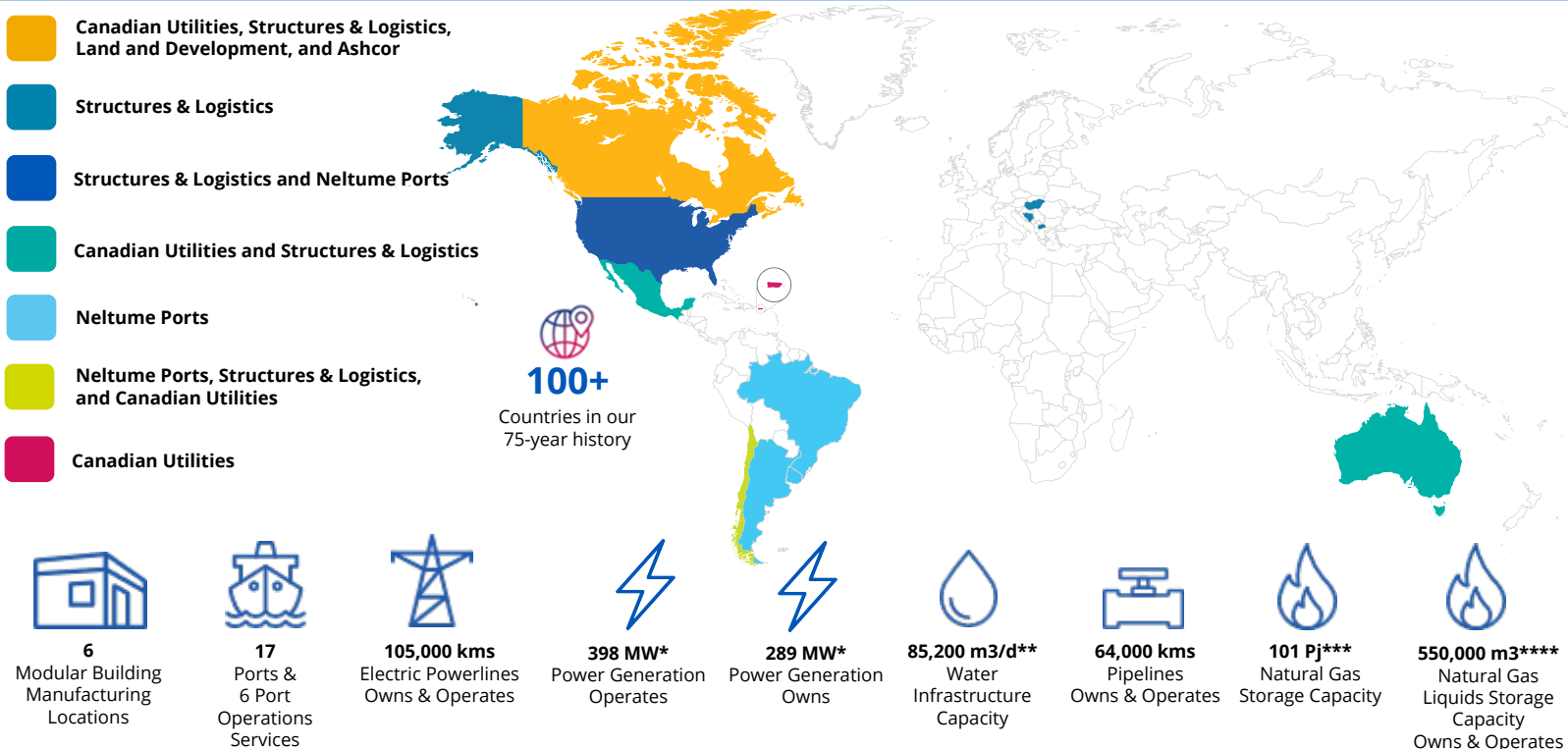
**Dividend Growth** – ATCO has a 29-year track record of increasing common share dividends.

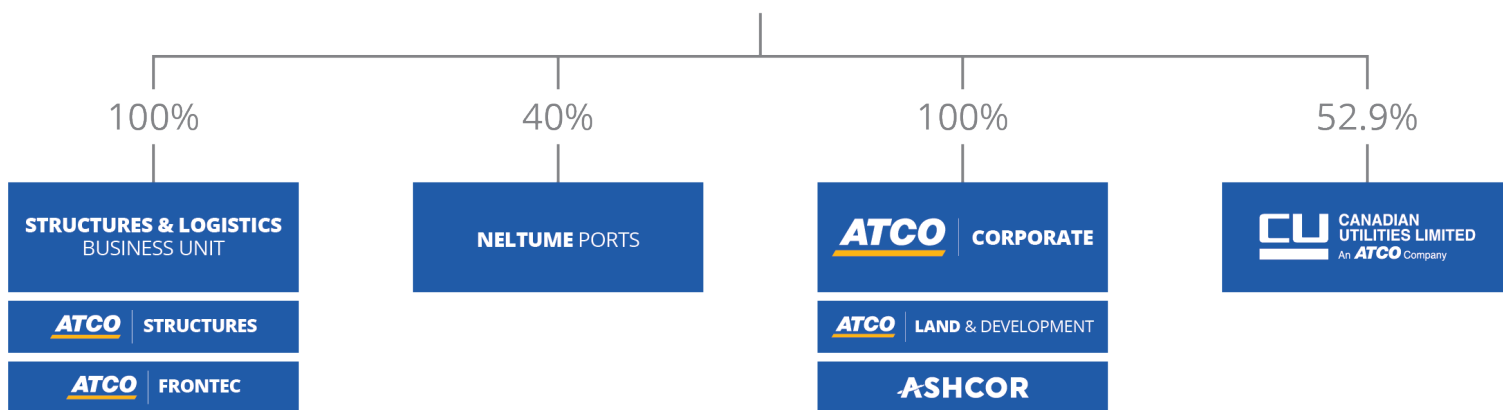
**Strong, Investment Grade, Credit Rating** – ‘BBB+’ rating by Standard & Poor’s, an ‘A’ (low) rating by DBRS Limited, and a ‘BBB+’ by Fitch.

## LEARN MORE ABOUT ATCO

- [Quarterly & Annual Reports](#)
- [Investor Presentations & Events](#)
- [Sustainability Report](#)
- [ESG Targets News Release](#)
- [Indigenous Peoples Partnerships](#)
- [Current Projects](#)
- [Sign up for Email News Alerts](#)

## ATCO AT A GLANCE





(1) It is important for prospective owners of ATCO shares to understand that ATCO is a diversified group of companies principally controlled by Sentgraf, a Southern family holding company.

## ANALYST COVERAGE

**BMO Capital Markets**  
Ben Pham

**CIBC Capital Markets**  
Mark Jarvi

**Credit Suisse**  
Andrew Kuske

**National Bank Financial**  
Patrick Kenny

**RBC Capital Markets**  
Maurice Choy

**TD Securities**  
Linda Ezergailis

## OUR LEADERSHIP TEAM

**Nancy C. Southern**, Chair & Chief Executive Officer

**Katie J. Patrick**, Executive Vice President, Chief Financial & Investment Officer

**Adam M. Beattie**, President, Structures

**M. George Constantinescu**, Senior Vice President & Chief Transformation Officer

**Dale Friesen**, Senior Vice President, Corporate Affairs & Chief Government Affairs Officer

**Jim Landon**, President, Frontec

**Becky A. Penrice**, Executive Vice President, Corporate Services

**Sarah J. Shortreed**, Executive Vice President & Chief Technology Officer

## 20-YEAR CUMULATIVE SHARE OWNER RETURN ON \$100 INVESTMENT

