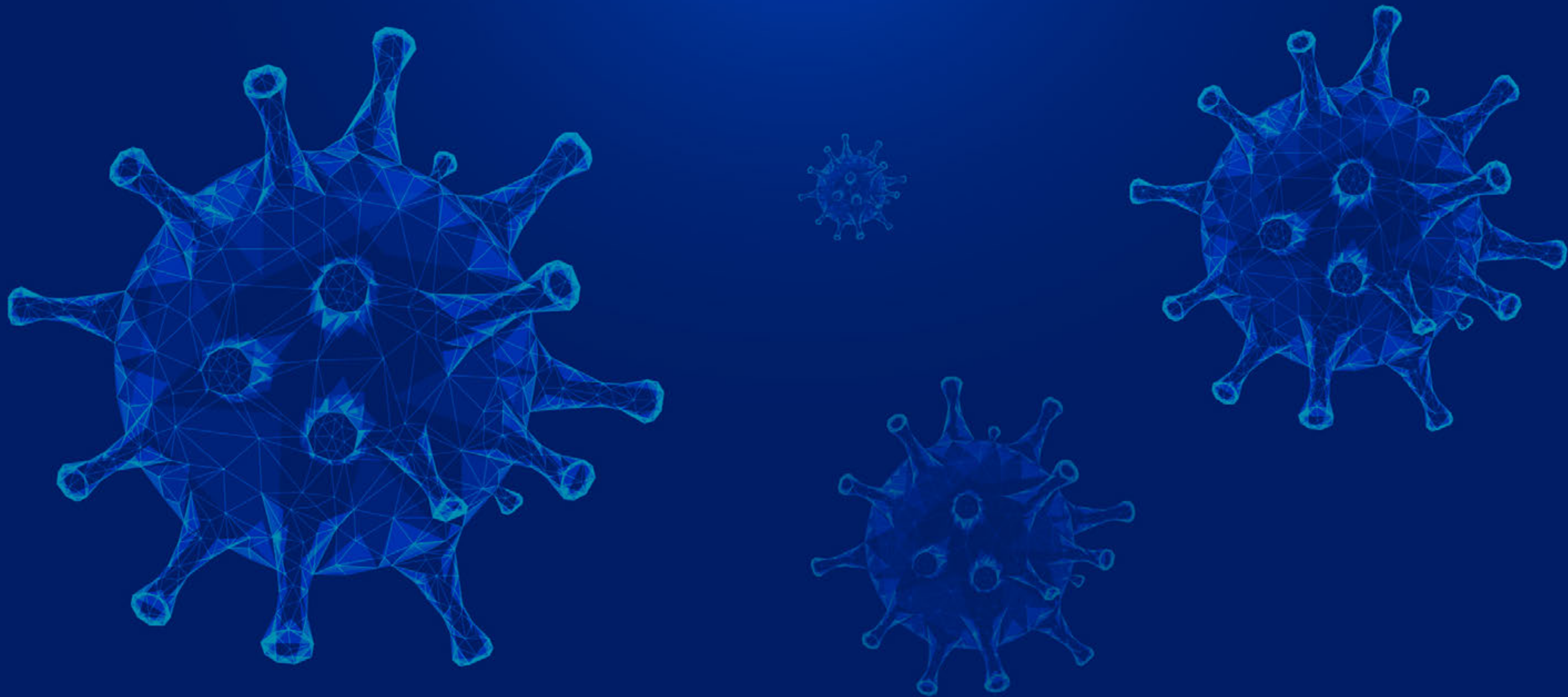


ATCO

**2020
ANNUAL
GENERAL
MEETING**



COVID-19 GLOBAL IMPACTS



ATCO FINANCIAL HIGHLIGHTS

ATCO

IN THE BEGINNING

ALBERTA TRAILER HIRE INCOME STATEMENT

for the year ended March 31, 1948

Rentals: Utility Trailers	Rentals: Small Sleepers
\$2.00 per day	\$10.00 per week
\$3.00 per day	\$15.00 per week
<hr/>	
Sales	\$ 1,077.65
Less Cost of Sales	621.89
Gross Margin	\$ 455.76
<hr/>	
Expenses	\$ 771.6
Advertising	6.21
Bank Charges	257.60
Freight	209.22
Insurance	42.03
Legal	197.67
Postage, Printing	57.50
Rent	71.19
Repairs	41.17
Supplies	8.05
Taxes	60.30
Telephone	10.00
Travel	10.05
Utilities	4.00
Wages	
	\$ 1,052.15
Net Loss	\$ (596.39)

1948

**SMALL SLEEPER
RENTAL COST**

\$10.00 / WEEK

**NET LOSS
(\$596.39)**

ATCO FINANCIAL HIGHLIGHTS



ATCO TODAY

CONSOLIDATED ANNUAL RESULTS
for the year ended December 31, 2019

Financial (Millions of Canadian Dollars)

Revenues	\$4,706
Adjusted Earnings	\$365
Earnings attributable to Class I and II shares	\$513
Total Assets	\$21,703
Class I and II share owners' equity	\$4,000
Funds generated by operations	\$1,927
Capital investments	\$1,324

Class I and II Share Data

Adjusted earnings per share	\$3.19
Earnings per share	\$4.49
Dividends paid per share	\$1.62
Weighted average shares outstanding (thousands)	114,370

TEN YEAR TOTAL RETURN ON \$100 INVESTMENT
December 31, 2009 to December 31, 2019

	Compound Growth rate	Cumulative Return
ATCO Class I	10.6%	\$274
ATCO Class II	10.6%	\$275
S&P / TSX Composite	6.9%	\$195

2019

CAPITAL INVESTMENTS

\$1.3B

TOTAL ASSETS

\$22B

OIL & NATURAL GAS – VITAL TO HEALTHCARE



OIL & NATURAL GAS – VITAL TO HEALTHCARE

ARTIFICIAL HIP

Metal

Polyethylene cup and liner

ARTIFICIAL KNEE

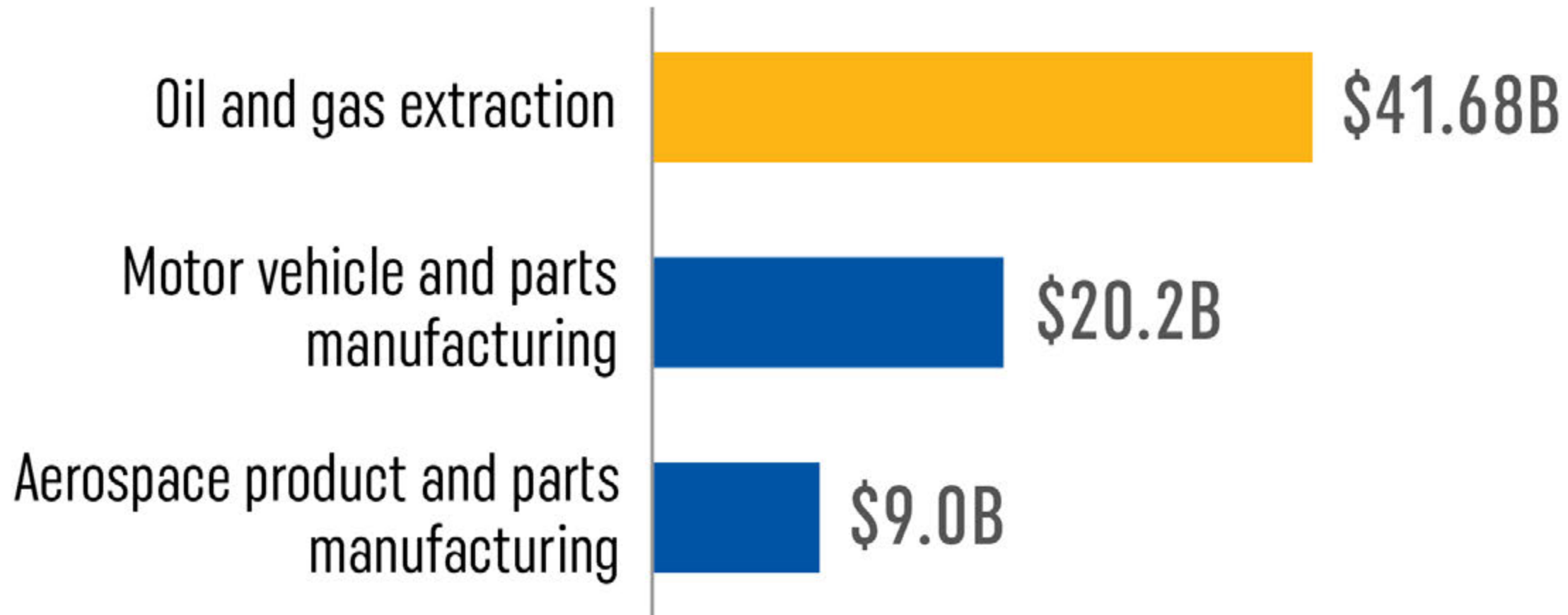
Metal

Polyethylene spacer

Metal

FUELLING CANADIAN PROSPERITY

CONTRIBUTIONS TO CANADIAN GDP BY INDUSTRY



RESPONDING IN TIMES OF CRISIS



ATCO

**2020
ANNUAL
GENERAL
MEETING**



IN MEMORIAM



NORM ROBERTSON

ATCO DIRECTORS



**ROBERT
BOOTH**



**DENIS
ELLARD**



**MICHAEL
RAYFIELD**



**ROBERT
ROUTS**



**NANCY
SOUTHERN**



**LINDA
SOUTHERN-HEATHCOTT**



**ROGER
URWIN**



**SUSAN
WERTH**



**CHARLES
WILSON**

ATCO

**2020
ANNUAL
GENERAL
MEETING**



STRATEGIC FOCUS

THE ESSENTIALS



THE ESSENTIALS



HOUSING

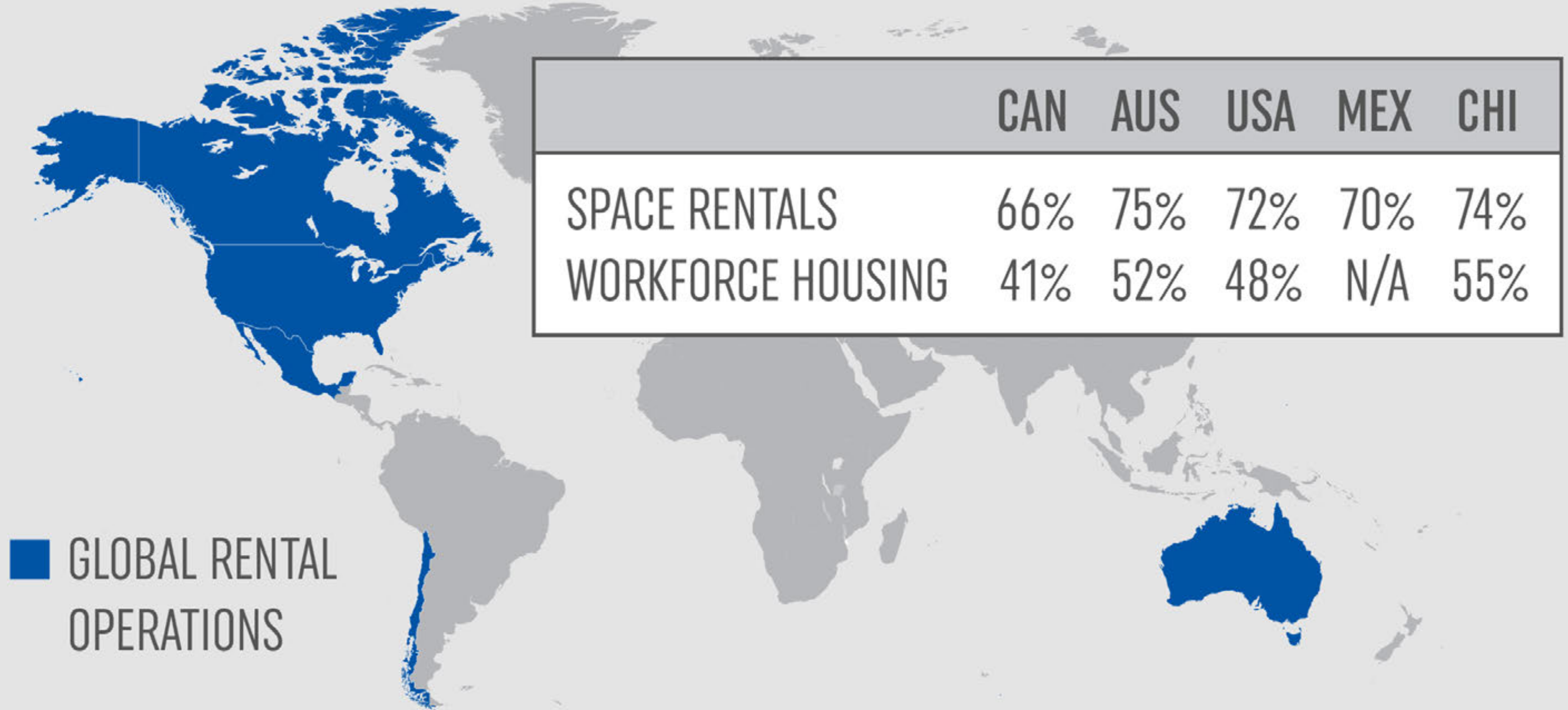


LEADERS IN WORKFORCE HOUSING

LNG-C, B.C.



GLOBAL FLEET UTILIZATION



■ GLOBAL RENTAL OPERATIONS

MODULAR MEDICAL FACILITIES



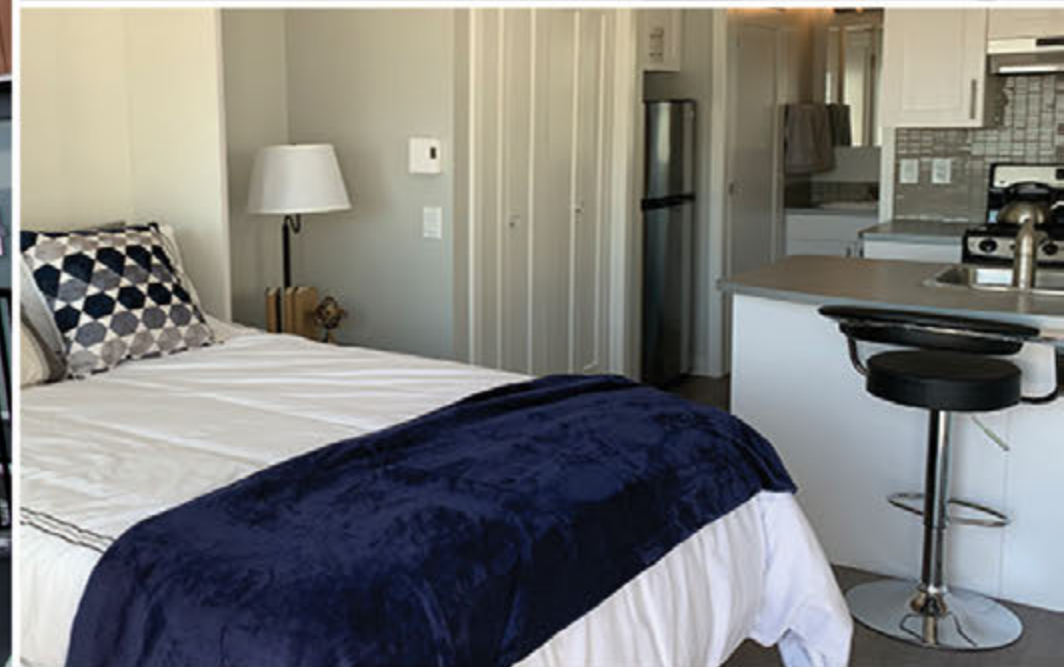
TEMPORARY HOSPITALS

Tijuana, Mexico



HOMES FOR HEROES

Calgary, Alberta



RAPID MOBILIZATION

Tuscan Ridge Lodge, California



THE ESSENTIALS

LOGISTICS &
TRANSPORTATION



DISASTER RESPONSE



PARTNERING FOR RESILIENCE

Siksika First Nation, Alberta



NELTUME PORTS

Terminal Pacifico Sur Valparaíso, Chile



THE ESSENTIALS



ENERGY



OPERATIONAL EXCELLENCE: ELECTRICITY



30%
IMPROVEMENT

IN DISTRIBUTION
RELIABILITY*

20%
REDUCTION

IN DISTRIBUTION O&M
COSTS PER KM LINE*

21%
LOWER

DISTRIBUTION COSTS
VS PEER AVERAGE

37%
LOWER

TRANSMISSION COSTS
VS PEER AVERAGE

OPERATIONAL EXCELLENCE: NATURAL GAS

60%
LOWER

O&M COSTS VS
INDUSTRY AVERAGE

60%
FASTER

TO INSTALL NEW
NATURAL GAS SERVICE

71%
FEWER

HIT LINES VS
INDUSTRY AVERAGE

77%
FEWER

LEAKS VS
INDUSTRY AVERAGE

ALBERTA POWERLINE



FUEL OF THE FUTURE

Clean Energy Innovation Hub, Western Australia



RETAIL GROWTH

100,000
CUSTOMERS
AND
COUNTING...

ATCO BLUE FLAME KITCHEN



ATCO BLUE FLAME KITCHEN



MAKING A DIFFERENCE

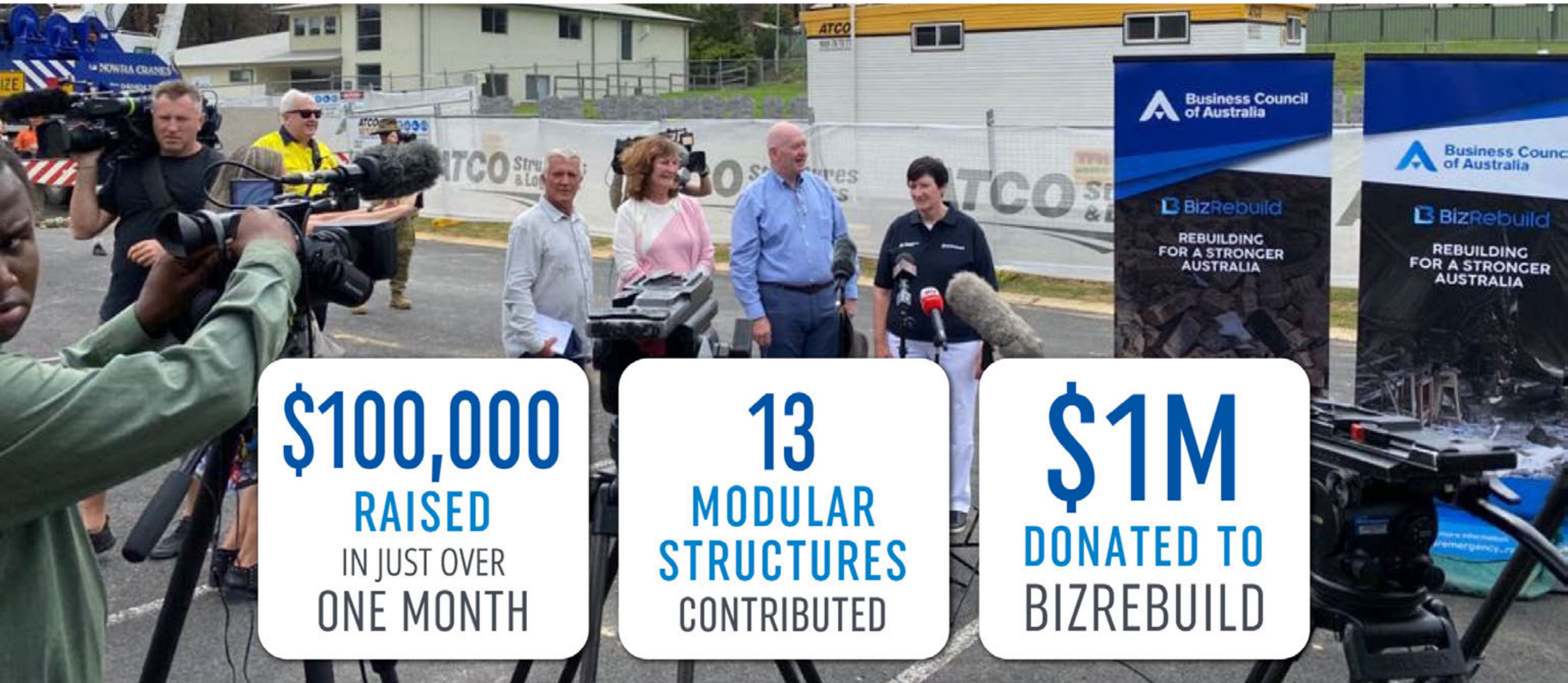


COMMUNITY ENGAGEMENT



ATCO RESPONDS

Mogo, New South Wales



\$100,000
RAISED
IN JUST OVER
ONE MONTH

13
MODULAR
STRUCTURES
CONTRIBUTED

\$1M
DONATED TO
BIZREBUILD

CONTRIBUTING TO OUR COMMUNITIES



7,731
HOURS

VOLUNTEERED
IN 2019

249,000
HOURS

VOLUNTEERED
SINCE 2006

\$2.7M
RAISED

BY EMPLOYEES
IN 2019

\$44M
RAISED

BY EMPLOYEES
SINCE 2006

ATCO

THANK YOU

